

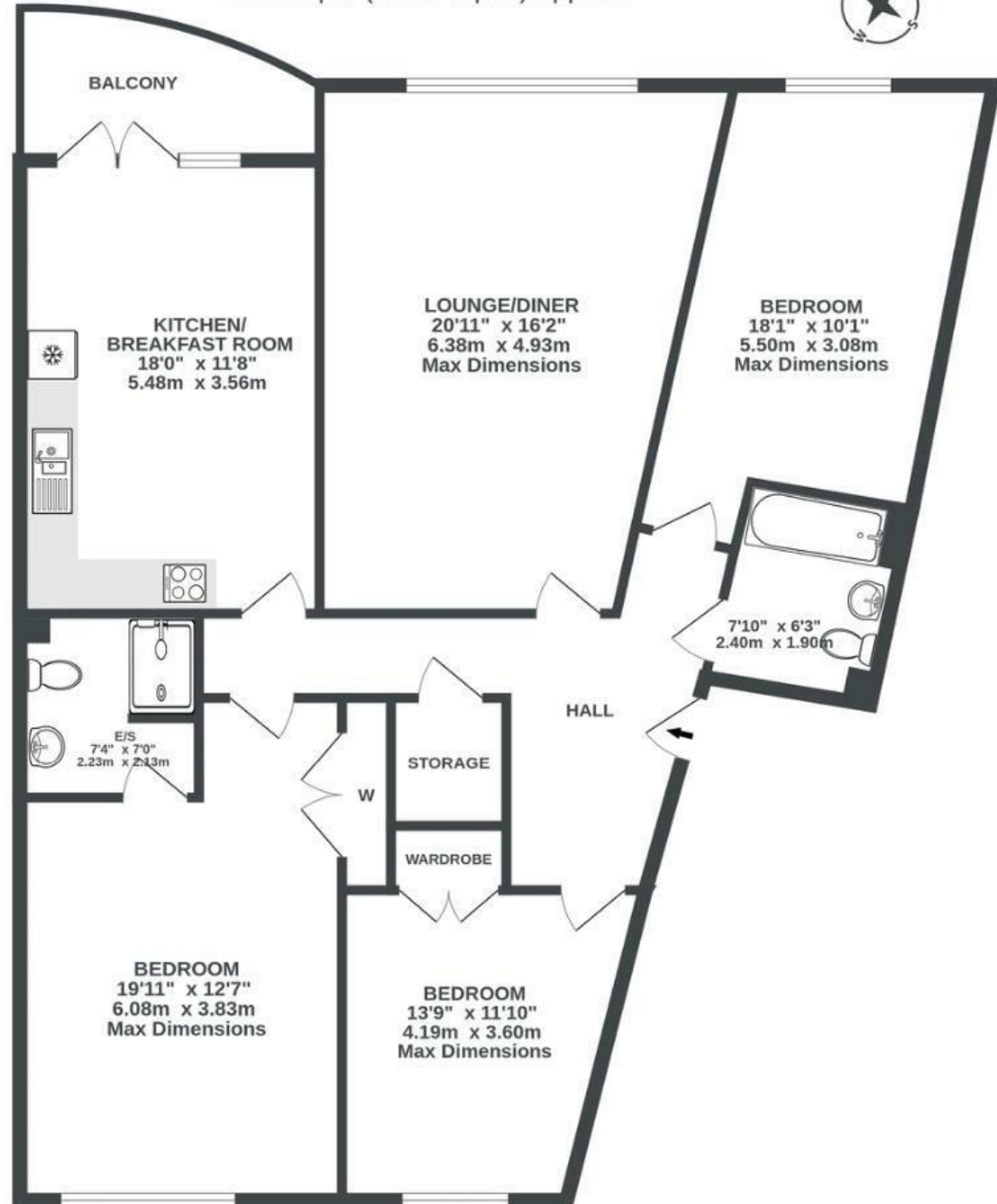
Greenwich Apartments

REDLAND

APPROXIMATE FLOOR AREA
124 SQM / 1335 SQFT



FIRST FLOOR
1335 sq.ft. (124.0 sq.m.) approx.



Illustrations are for reference purposes only, measurements are approximate, not to scale.

Boardwalk

Redland Court

, BRISTOL



£635,000



BS6 7BE



3 Bedrooms



2 Bathrooms

"We bought this apartment when it was first built in 2004. We fell in love with the sheer size of the huge double bedrooms along with large windows letting in so much light and plenty of storage. The peaceful surrounding gardens and enjoying breakfast on the terrace on a sunny day. This apartment perfectly suited our family needs for the great location great schools all within walking distance. A stones throw away from Whiteladies Road with great restaurants my favourite Bosco pizza, cafes and bars. The location is so peaceful and surrounded by so much greenery. You have both redland green park and the downs within walking distance. We're locals at the multiple independent cafes and bars that surround us on both Whiteladies Rd and Gloucester Rd. Whether you're a couple, family or retiree Redland has so much to offer."

